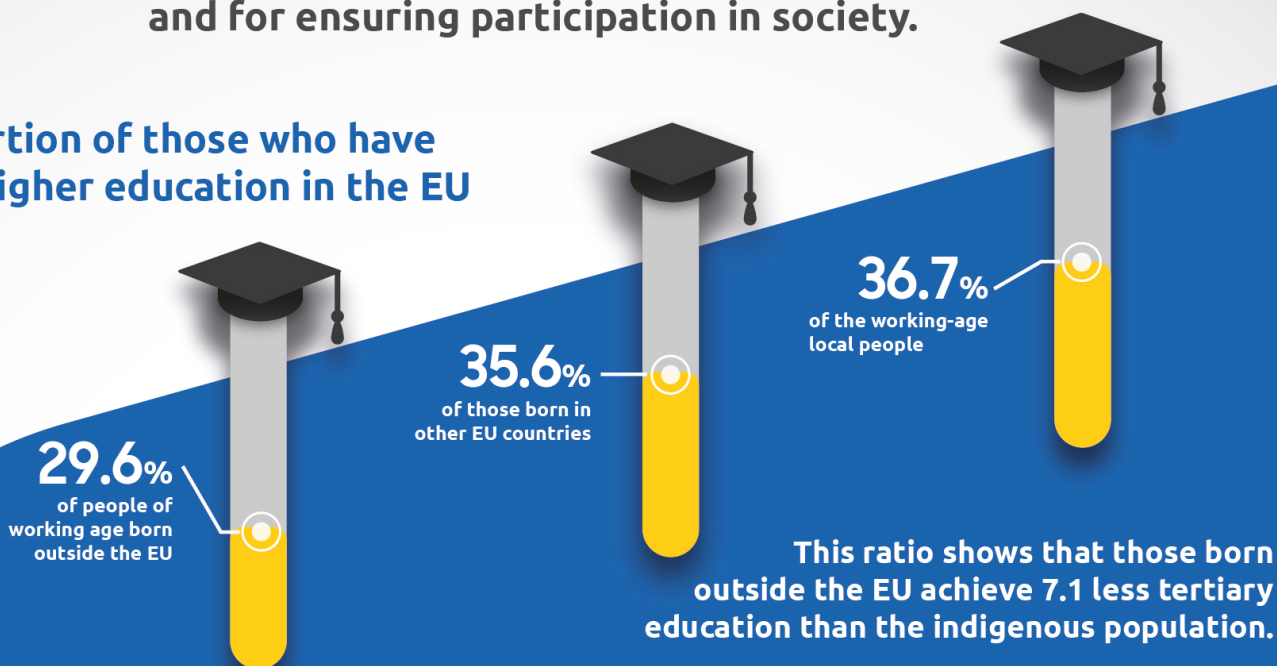


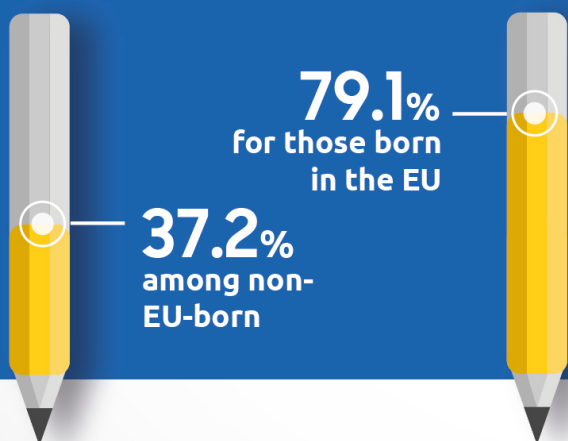
Education

Education is the most effective tool for building an inclusive society and for ensuring participation in society.

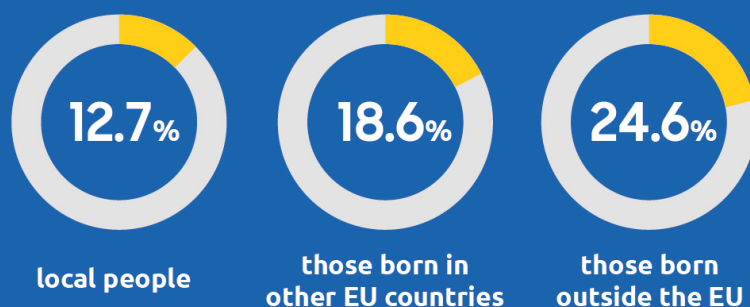
the proportion of those who have attained higher education in the EU



the number of people aged 25-54 with a secondary level of education in the EU*



The ratio of young people between the ages of 15-29 who neither participate in education nor employment



*According to 2020 data

- School is one of the most effective areas in the integration process.
- Equal educational opportunities bring together.



Language learning



Adaptation to society more easily



Social inclusion

Guidance services such as coaching and mentoring can be offered to support newcomers' educational processes and make this transition easier. Orient8 aims to provide such a service to newcomers with its social mentoring program.

Source: Eurostat