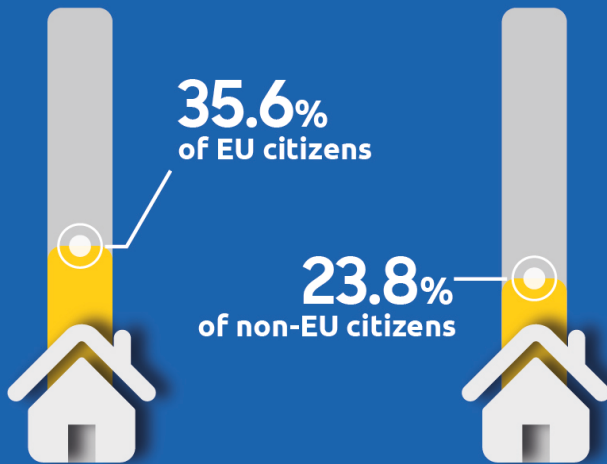


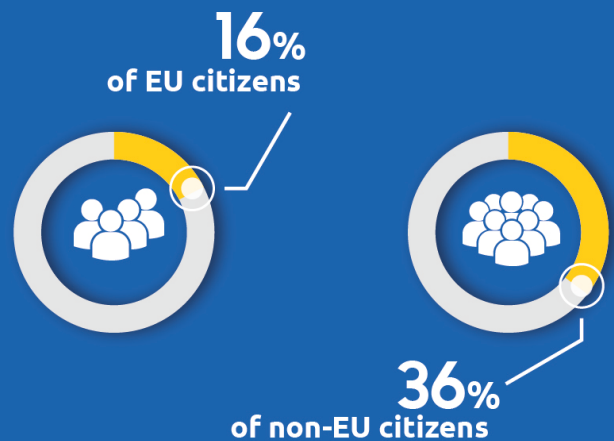
Housing

Access to adequate and suitable housing is the main determinant of the integration process.

the proportion of those who own their own houses in the EU*



the overcrowded rate



*survey conducted in 2009



The increase in housing costs affects non-EU citizens the most

Shelter is one of the most basic and primary needs of human beings.

- A new homeowner may form stronger bonds with the host community.
- Housing solutions positively affect the successful integration process along with employment and social services.



Orient8's Welcome Application includes a housing category that assists newcomers in finding suitable accommodations.

For more information: <https://orient8.eu>

Source: Eurostat